



Mounting: pole/wall
Housing:
 die-cast aluminum and
 extruded aluminum
 6030 aluminum PCB,
 3mm thickness

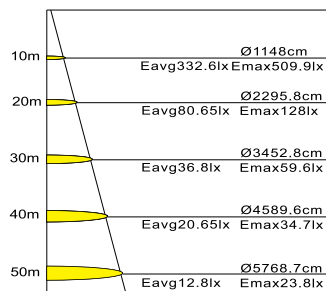
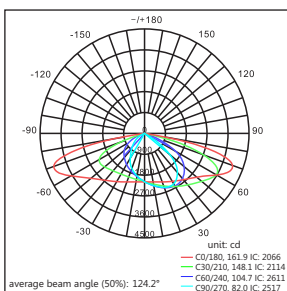
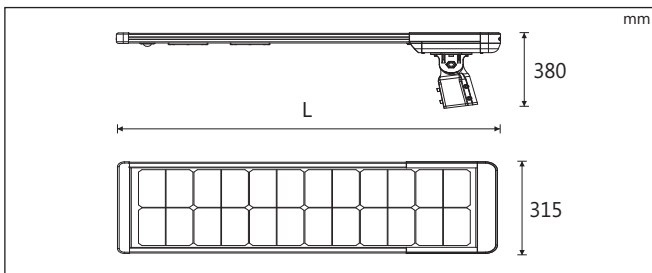
LED: 3030/5050 (Lumileds)
CRI: Ra>70
Charging time: 6-7hrs
CCT:
 CT30-3000K/ CT40-4000K
 CT50-5000K/CT57-5700K
 CT65-6500K
Efficacy: 120-160 lm/W

Additional options:
 - LED strip lights on both sides
 (blue, green, red, etc.)
 - Smart control
 - CCTV
 - Red warning light
 - Adjustable LED module ($\pm 20^\circ$)
 - Electric supply

Application:
 outdoors
 public/private/residential
 streets
 parks/pathways
 gardens
Ambient Temp: -40°~+55°C



Ref Code	Watt	Solar panel	Lithium battery	Lm(±)	LxWxH
46.50.001.01.20	20W	40W	12.8V/18Ah	2400-3200	780x315x380
46.50.001.02.40	40W	60W	12.8V/27Ah	4800-6400	1100x315x380
46.50.001.03.60	60W	80W	12.8V/33Ah	7200-9600	1420x315x380
46.50.002.01.80	80W	90W	12.8V/39Ah	9600-12800	1580x315x380



Mounting: pole/wall
Housing: die-cast aluminum and extruded aluminum
 6030 aluminum PCB, 3mm thickness

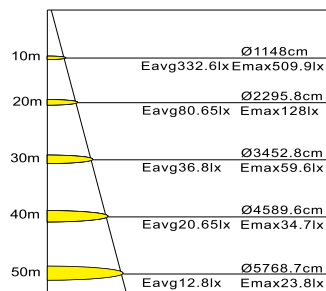
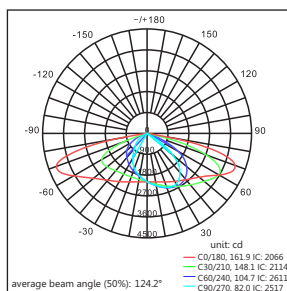
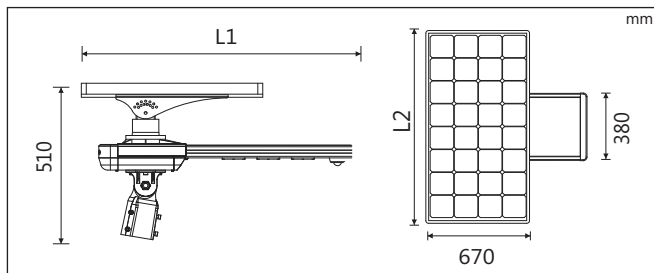
LED: 3030/5050 (Lumileds)
CRI: Ra>70
Charging time: 6-7hrs
CCT: CT30-3000K/ CT40-4000K
 CT50-5000K/CT57-5700K
 CT65-6500K
Efficacy: 120-160 lm/W

Additional options:
 - LED strip lights on both sides (blue, green, red, etc.)
 - Smart control
 - CCTV
 - Red warning light
 - Adjustable LED module ($\pm 20^\circ$)
 - Electric supply

Application:
 outdoors
 public/private/residential streets
 parks/pathways
 gardens
Ambient Temp: $-40^\circ \sim +55^\circ\text{C}$



Ref Code	Watt	Solar panel	Lithium battery	Lm(\pm)	L1(fitting)	L2xW(solar panel)
46.50.003.01.30	30W	80W	12.8V/27Ah	2400-3200	700	780x670
46.50.003.02.40	40W	80W	12.8V/33Ah	4800-6400	700	780x670
46.50.003.03.60	60W	110W	12.8V/39Ah	7200-9600	700	1020x670
46.50.003.04.80	80W	110W	12.8V/45Ah	9600-12800	940	1020x670
46.50.004.01.100	100W	170W	12.8V/27Ah	12000-16000	940	1480x680
46.50.004.02.120	120W	170W	25.6V/33Ah	14400-19200	940	1480x680

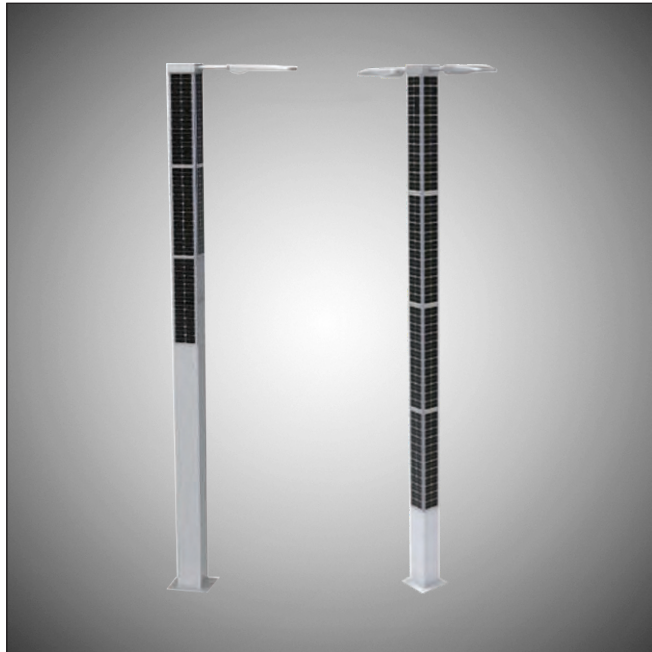


Mounting: pole/wall
Material:
 hot-dip galvanized steel pole

LED: 3030/5050 (Lumileds)
CRI: Ra>70
Charging time: 6-7hrs
CCT:
 CT30-3000K/ CT40-4000K
 CT50-5000K/CT57-5700K
 CT65-6500K
Efficacy: 120-160 lm/W

Additional options:
 - Motion sensor
 - Time control intelligent mode
 - Automatically turn on and off according to brightness
 - Integrated monocrystalline silicon solar panel has more than 21% photoelectric conversion efficiency
 - Various bracket lengths and angles

Application:
 outdoors
 public/private/residential streets
 parks/pathways
 gardens
Ambient Temp: -40°~+55°C



Square shape solar pole light provided all the 4 sides with solar panels



Mono-crystalline silicon solar panel



Over 20% transfer efficiency



25 years life span

Ref Code	Watt	Solar Module	Lm(±)	Pole height	Solar module dimension	Head	Installation height
46.50.005.01.80	80W	540W	8000-9600	8m	290x1330x9pcs	Single	3990
46.50.005.02.80	80W	600W	8000-9600	8m	290x1330x10pcs	Single	3990
46.50.005.03.100	100W	720W	10000-12000	8m	290x1330x12pcs	Single	3990
46.50.005.04.120	2x60W	1152W	6000-7200	8m	290x1650x16pcs	Double	6600
46.50.006.01.100	100W	720W	10000-12000	10m	290x1330x12pcs	Single	3990
46.50.006.02.160	2x80W	1440W	16000-19200	10m	290x1650x20pcs	Double	8250
46.50.007.01.200	2x100W	1728W	20000-24000	12m	290x1650x24pcs	Double	9900
46.50.008.01.240	2x120W	2016W	12000-14400	14m	290x1350x28pcs	Double	9900



Cylindrical shape solar pole light provided the whole stem 360° with solar panels



Mono-crystalline silicon solar panel



Over 20% transfer efficiency



25 years life span

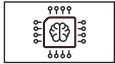
Ref Code	Watt	Solar Module	Lm(±)	Pole height	Solar module dimension
46.50.009.01.60	60W	2x170W	7200	6m	645x2000x2pcs
46.50.010.01.80	80W	3x190W	9600	8m	645x2000x2pcs
46.50.011.01.100	100W	4x190W	12000	10m	645x2000x2pcs

**Safe & reliable**

Industrial level elements + texas instruments program + high strength PC
+ die-cast aluminum housing + over 10 years controller life span

**Multi-protection**

Overload | Over current | Over temperature | Over voltage | Overcharge | Over discharge
Reduces damage, improves maintenance, prolongs life span and protect all the peripheral units

**Smart mode control & intelligent power adjustment**

The power supply is configured using a high precision DAC custom dimming profile, fully customized by the user up to 5 levels and 12 months work mode settings can be done at one single time.
Adjusts power discharge intelligently according to the remaining energy and prolongs the lighting time.

**Wireless Networking Option**

Wireless networking option makes the street light smarter with ease of control, monitor and manage remotely.

**Remotely Control the Switch and Lighting Adjustment**

Control and configure the lights remotely from anywhere based on your seasonal requirement.

**Cloud Operation Monitoring**

Mange the voltage, power, energy consumption or any failures anywhere all through the cloud management system.

**Authority Management**

United login password through system permission settings prevents unauthorized person to operate and keeps the system safer and reliable.

**Remote Switch for working modes**

Change the working modes using the remote switch to save energy and prolong working time of the light according to special project requirements.

**GPS MAP**

With GPS feature you can locate the light on real time and get all the lighting status.

**Big Data Analysis**

Remote monitoring information, real time inquiries and historical data inquiries, which can be generated as statement or graphical representation for easy data analysis.

**Failure Warning**

Immediate warning and alarm system to the client if any detection of malfunctions occur.